

Regional Governance and Integrated Planning in The Hague Region



Marcel Houtzager
Regional Portfolio holder on Green, Recreation and Tourism
The Hague Region

wethouderhoutzager@leidschendam-voorborg.nl

TORONTO, 24 March 2011

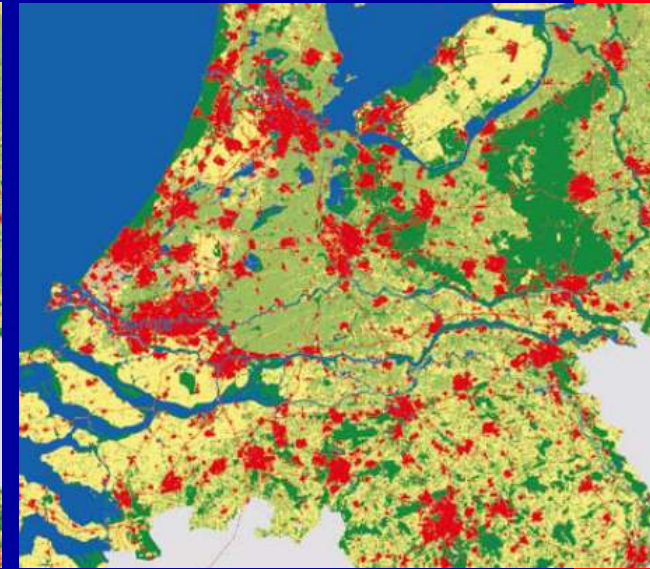
Spatial developments and green systems in the Western part of The Netherlands (Randstad Holland)



1900

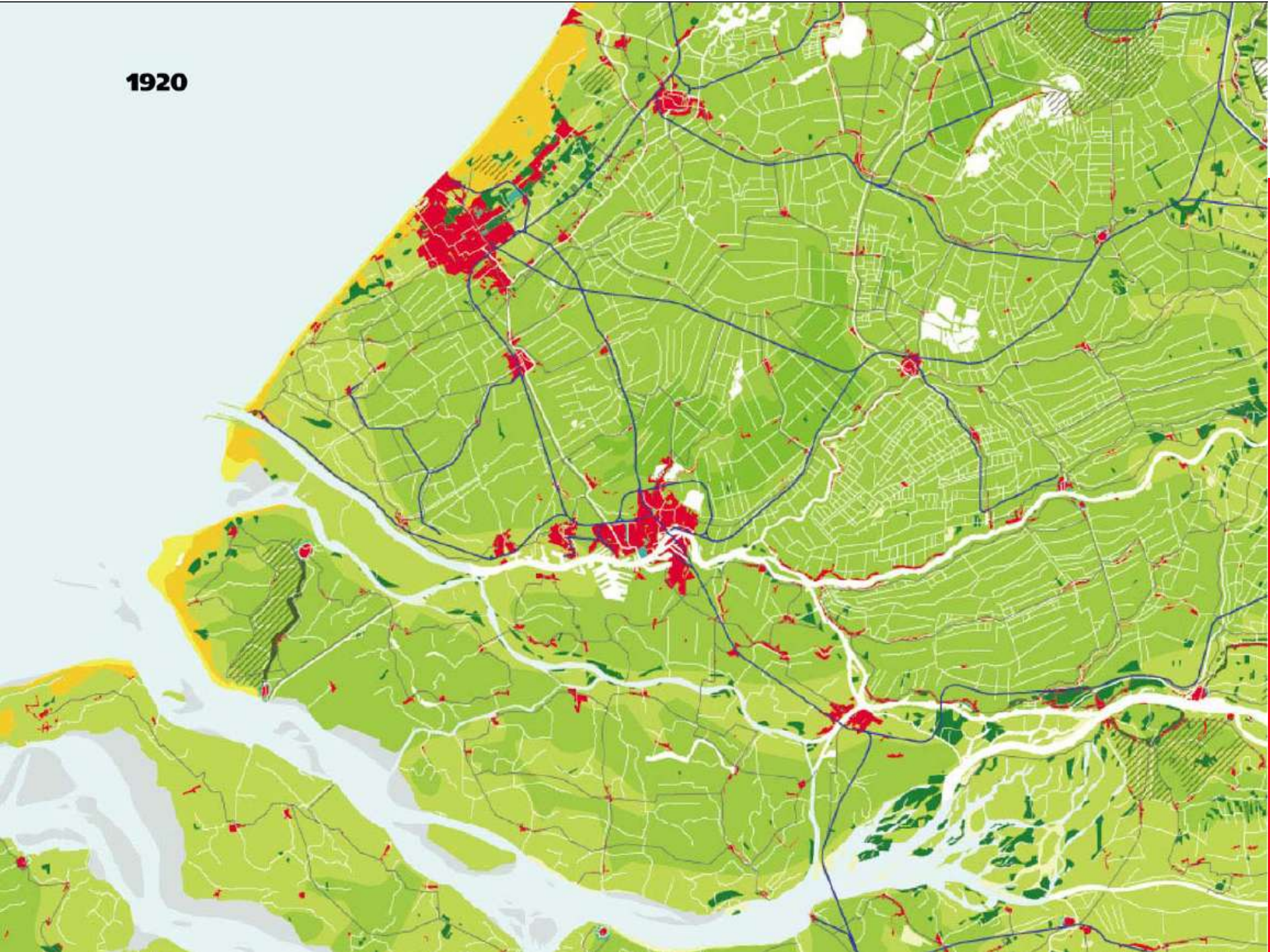


1960



2010

1920



1950



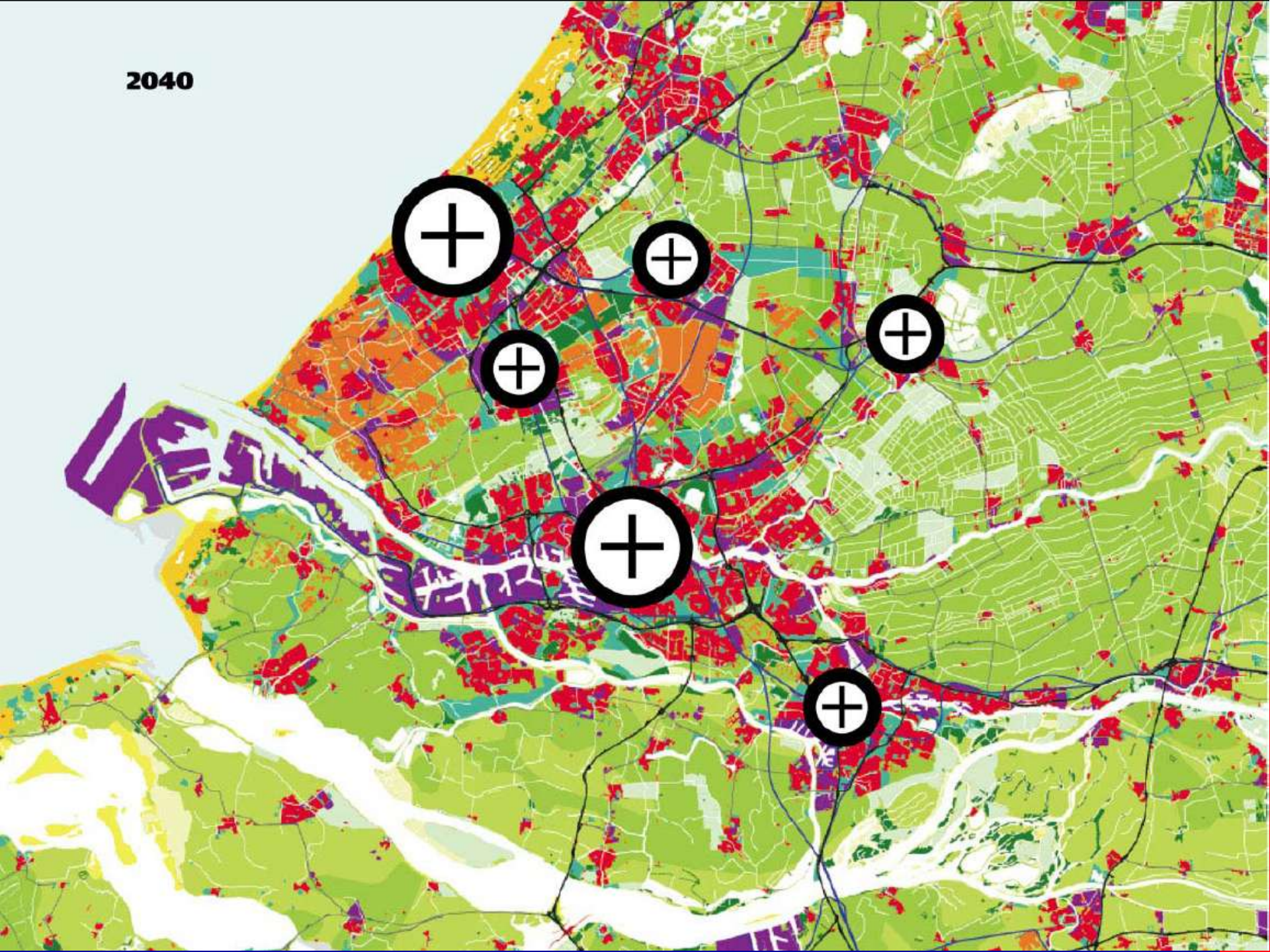
1980



2010



2040



Current challenges for the policy on the green areas and for the governance structures

Challenges for the green areas policy in the region:

- New central government / cuts in budgets
- Consequences of the financial crisis
- City pressure
- High price of land
- Globalization
- Changing European policies (CAP)

Challenges for the governance structures

- In search of optimal governance structure and scale
- In search of consensus for the possible new governance structure (The Hague Region and The Rotterdam Region, together with the two big cities and the Province of South Holland) – aim: a Metropolitan Region

Green areas policy and Regional Governance

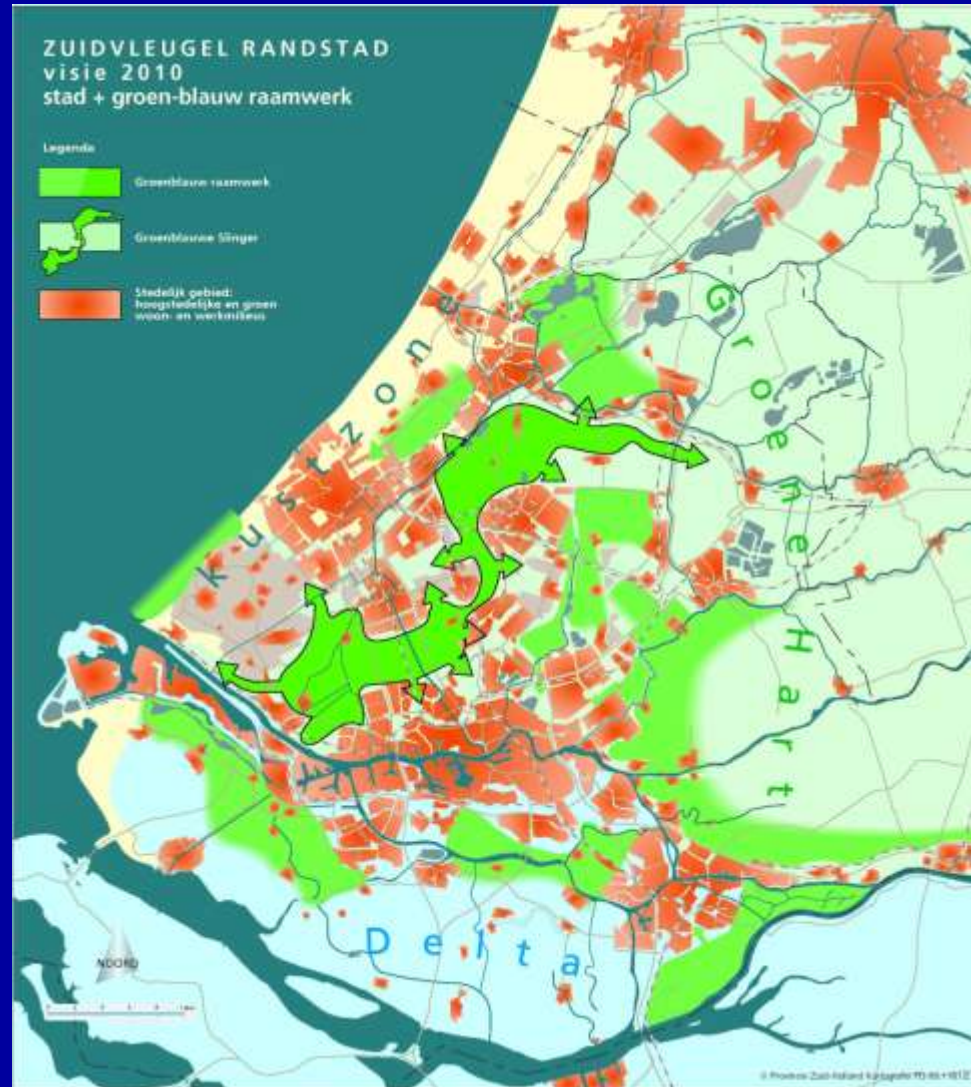


Key tasks within the green policy and the regional governance

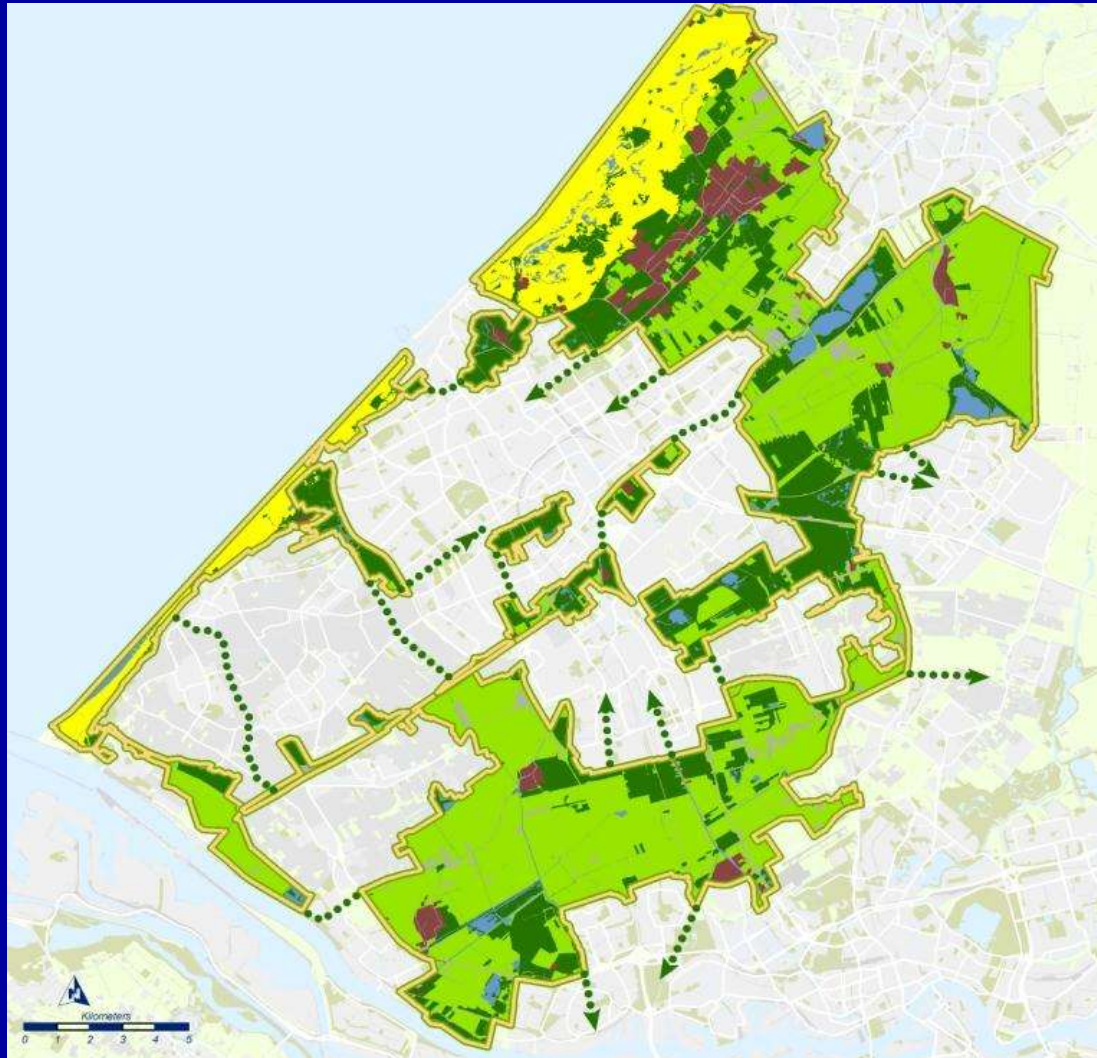
- Urban – peri-urban balance (integrated planning and inter-municipal cooperation)
- Territorial, social and economic cohesion
- Densification in the urban part - to spare green open space
- Connecting green areas in one accessible system



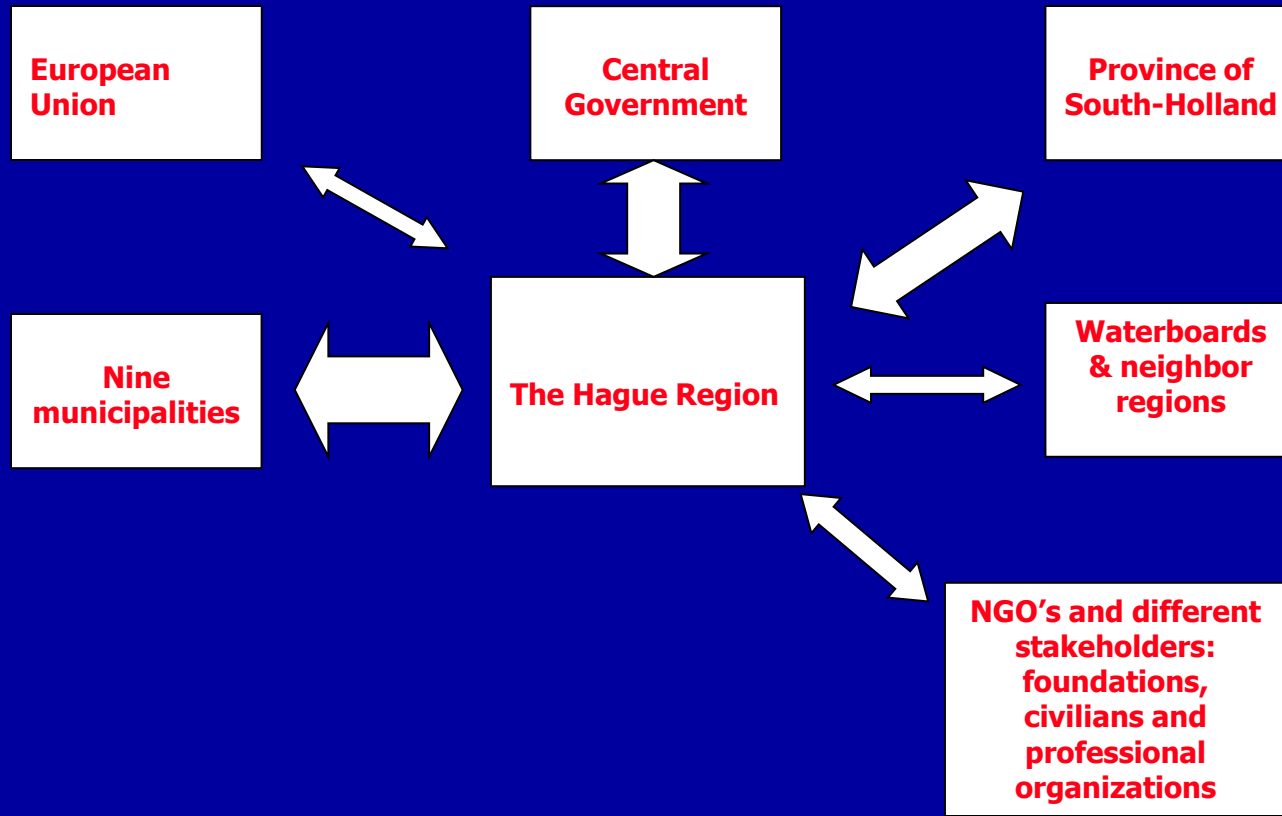
The green system of the Randstad



The Green System & Governance Structures in The Hague Region



Governance pattern for The Hague Region



The principles of good cooperation and consensus on the chosen policies

:

- Between the municipalities themselves, taking care of transparency and close communication with the citizens
- Between governments and NGO's, civilians, companies, universities
- Seeking constant consensus between all vertical and horizontal players in the process

Regional Green Vision and Execution Program



Core qualities of green areas in the region:

- Quality landscapes, consistent green and blue network
- Preserved and enhanced cultural historic identity
- High quality nature

Core functions of green areas in the region:

- Ecology: consistent network and preserved and enhanced en biodiversity
- Water: high quality, space for storage and recreation
- Urban – peri-urban linkages
- Agrarian economy

Developing regional park Duin, Horst & Weide and organising network governance

Duin, Horst & Weide



Duin Horst & Weide



The unique range of Dunes, Woods & (peat) meadows – a subject of area development and various initiatives linking closely the regional park with the surrounding big and small cities: The Hague, Ledschendam-Voorburg, Leiden to enable more cohesive economic, social and territorial development.

The regional park Hof van Delfland



Current challenges of regional park 'Hof van Delfland'

- Further containment of conflicting claims on land
- Steering and funding of area development in times of funding and budgetary cuts
- Prioritizing of the measures in view of changing policies and budgets
- Functional partnership with other authorities, private sector and the research community

Urban – peri urban relationships

New interpretation of the urban – peri urban relationship:

- City farming,
- Recreation links,
- Biomass in a cradle-to cradle form: C2C => €2€

Building closer urban - peri urban relationships – governments, supported by different NGO's and companies – strong basis for regional coherence

Sustainable development the key to economic prosperity

C 2 C



Sustainability



Prosperity



€ 2 €

